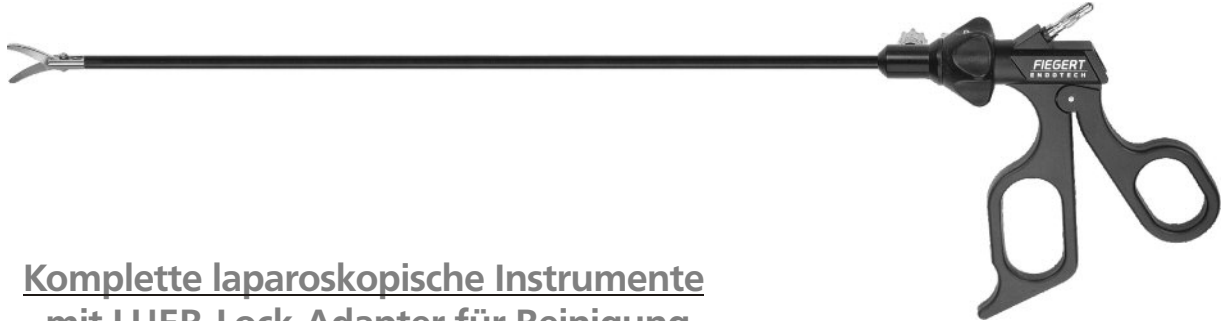




## ECO-Line



Komplette laparoskopische Instrumente  
-mit LUER-Lock-Adapter für Reinigung  
durch Spülung, nicht zerlegbar

Complete laparoscopic instruments  
-with LUER-Lock-Adapter for cleaning  
by irrigation, not dismountable

ohne Raste  
without ratchet



Biopsie, ohne Dorn  
Biopsy, without thorn

223.5301



Mikro-Dissektion, gebogen  
Micro dissection, curved

223.5302



Haken  
Hook

223.5312



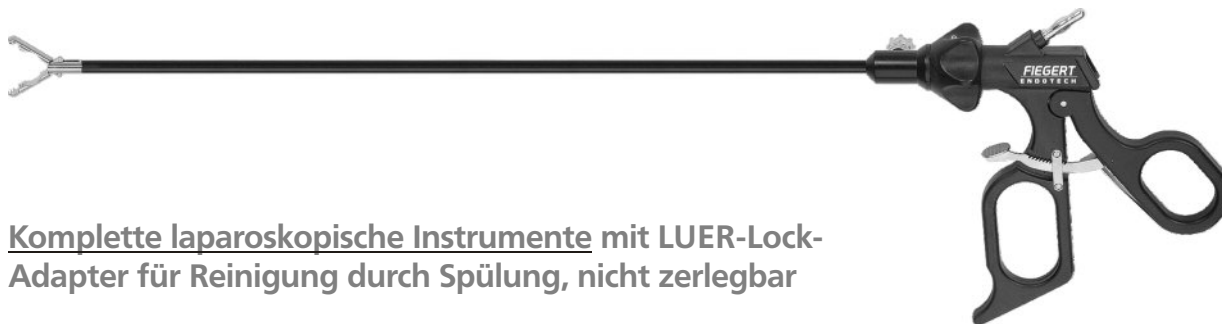
Peritoneal, stumpf  
Peritoneal, blunt

223.5314



Metzenbaum, gebogen  
Metzenbaum, curved

223.5341



**Komplette laparoskopische Instrumente mit LUER-Lock-Adapter für Reinigung durch Spülung, nicht zerlegbar**

**Complete laparoscopic instruments with LUER-Lock-Adapter for cleaning by irrigation, not dismountable**

**mit Raste  
with ratchet**



**Babcock**  
223.5304



**Atraumatisch**  
Atraumatic  
223.5305



**Klauengreifer, 2:3 Zähne**  
Claw grasper, 2:3 teeth  
223.5308



**Atraumatisch, mit Aussparung**  
Atraumatic, with reservoir  
223.5309



**Delphin**  
Dolphin  
223.5315



**Universal**  
Universal  
223.5317



**Maryland-Dissektor, gebogen**  
Maryland dissector, curved  
223.5321



**DeBaKey - Klemme, Maul 3 cm**  
DeBaKey - Clamp, jaw 3 cm  
223.5326



**Dissektion, 2:1 Zähne**  
Dissection, 2:1 teeth  
223.5327



**Dissektion, gefenestert**  
Dissection, fenestrated  
223.5329



**Mixer**  
223.5332



**Dissektion, 4:2 Zähne**  
Dissection, 4:2 teeth  
223.5338



**Allis mit DeBaKey-Zahnung**  
Allis with DeBaKey-teeth  
223.5342



**Scharf, gerieft, Maul 18 mm**  
Sharp, crosswise teeth, jaw 18 mm  
223.5343



**Dorsey, doppelbeweglich**  
Dorsey, double action  
223.5349



**Dorsey, einfachbeweglich**  
Dorsey, single action  
223.5350



**Dissektion, 4:2 Zähne**  
Dissection, 4:2 teeth  
223.5352

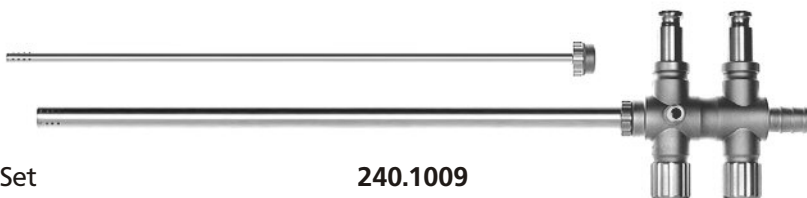


**Faßzange mit Kreuzzahnung**  
Grasper with crosswise teeth  
223.5355

## Saug-Spül-Instrumente Suction-Irrigation-Instruments

Nutzlänge 33 cm  
Working length 33 cm

Trompetenventilgriff  
Trumpet valve handle



Komplett-Set

Complete-Set

240.1009

Trompetenventilgriff

Trumpet valve handle

240.1009.G

Rohr Ø 5 mm

Tube Ø 5 mm

240.1009.05

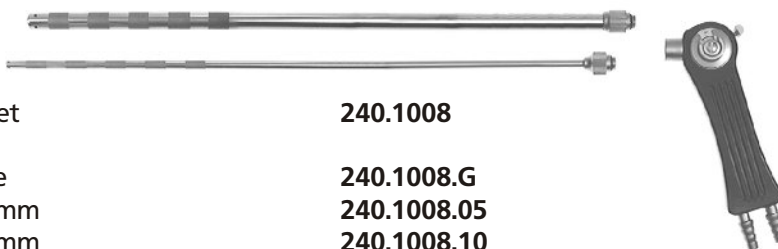
Rohr Ø 10 mm

Tube Ø 10 mm

240.1009.10

Pistolengriff

Pistol handle



Komplett-Set

Complete-Set

240.1008

Pistolengriff

Pistol handle

240.1008.G

Rohr Ø 5 mm

Tube Ø 5 mm

240.1008.05

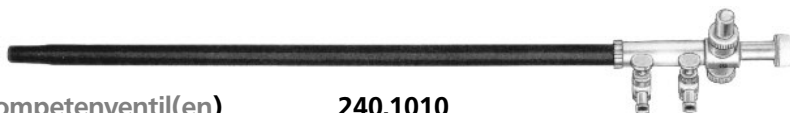
Rohr Ø 10 mm

Tube Ø 10 mm

240.1008.10

Ø 10 mm

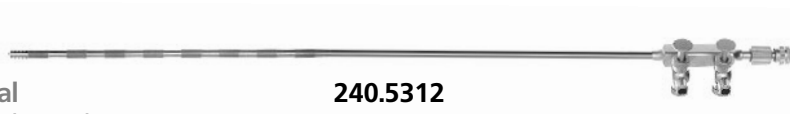
mit 2 seitlichen und Durchgangs-Trompetenventil(en)  
with 2 lateral and axial trumpet valve



240.1010

Ø 5 mm

graduiert, LL-Ansatz, mit Laser-Kanal  
graduated, LL-connection, with laser channel



240.5312

Ø 5 mm

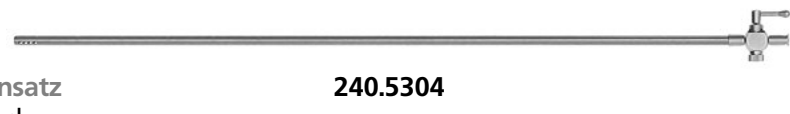
2-Wege-Hahn zur Einhandbedienung  
2-way stop cock, for one hand service



240.5311

Ø 5 mm

Saugrohr, graduiert mit Hahn, LL-Ansatz  
Suction tube, graduated with stop cock



240.5304

Ø 5 mm

Skalpellhalter für Saug- und Spülrohr  
Blade handle for suction-irrigation tube

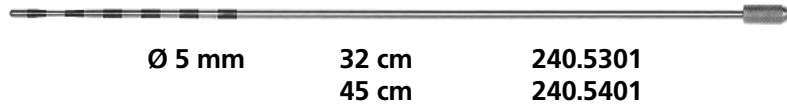


240.1011

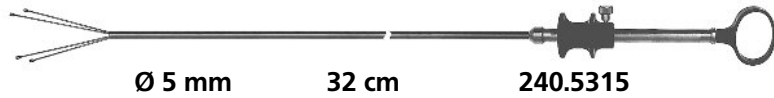


## Taststäbe / Kanülen Palpations / Cannulas

Taststab, graduiert  
 Palpation probe, graduated



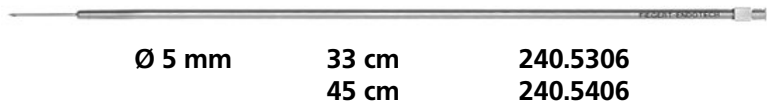
Leber-Elevator, 4-armig  
 Lever elevator, 4 arms



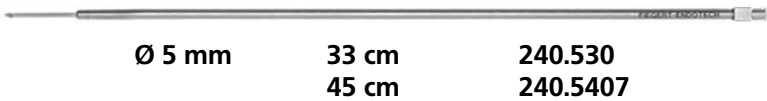
Fächer-Retraktor, 4-armig, 90° abwinkelbar,  
 Tissue retractor, 4 arms, 90° angulation



Injektionskanüle, LL-Ansatz, 0,8mm,  
 Injection needle, LL-adaptor



Punktionskanüle, LL-Ansatz, 1,5mm,  
 Puncture needle, LL-adaptor



## Cholangiographie Cholangiography



Cholangiographie-Zange Ø 5 mm  
 mit Sperre und Kanal für Katheter 6 CH  
 Cholangiography fixation clamp Ø 5 mm  
 with ratchet and cateter channel 6 FR



225.5320

Katheter-Führungstubus Ø 5 mm, 30 cm  
 Catheter guide, Ø 5 mm, 30 cm



240.5320

# Endo-Clip-Applikator Endo-Clip-Applicator



**Endo-Clip-Applikator - 360° drehbar - mit LL-Adapter oder zerlegbar für Reinigung**  
**Endo-Clip-Applicator - 360° rotatable - with LL-Adapter or detachable for cleaning**

Titan-Clip Marke Titan-Clip branch	Modell Model	Ø	Applikator mit LL-Adapter with LL-Adapter	Applikator zerlegbar detachable
Ethicon	LT 100 (small)	5 mm	-	225.0500.ZR
	LT 200 (medium)	10 mm	225.1000.M	225.1000.ZR.M
	LT 300 (medium-large)	10 mm	225.1000	225.1000.ZR
	LT 400 (large)	10 mm	225.1000.L	225.1000.ZR.L
Pilling-Weck	medium	10 mm	225.1000.P.M	225.1000.ZR.P.M
	medium-large	10 mm	225.1000.P	225.1000.ZR.P
Horizon	medium	10 mm	225.1000.H.M	225.1000.ZR.H.M
	medium-large	10 mm	225.1000.H	225.1000.ZR.H